

Make & Model

CHEVROLET SILVERADO 1500 07-13 (69" Short Bed)

Parts A - Flares & Rubber Strip



OEM Style

Parts B - Parts for Installation



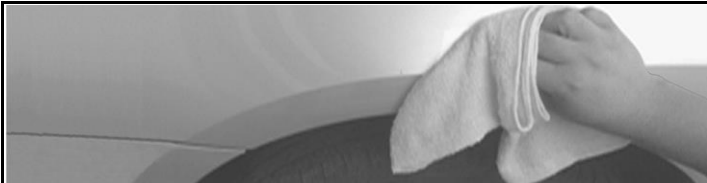
Caution: Always check the package, ensure the fitment of fender flare and follow the instruction carefully. PSI will not be responsible for painting & other cost incurred to incorrect fender flares, failure of installation, shipping damage or modified flares.

1. Pre-Installation



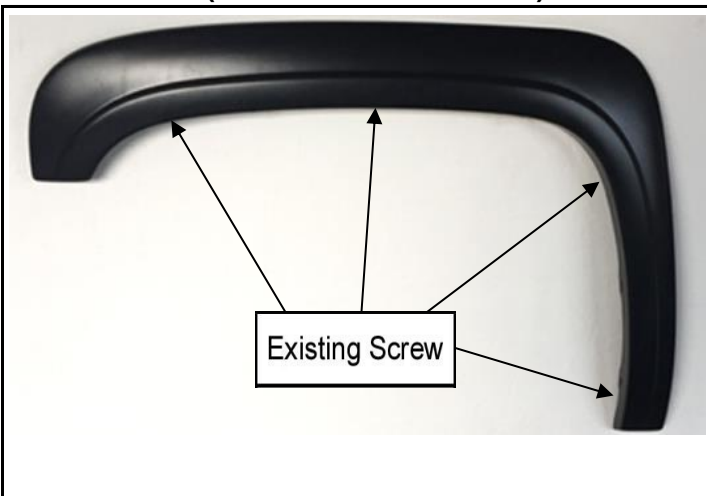
1. Prefit and ensure both left (driver) side & right (passenger) side fender flare to the vehicle before painting or installation.
2. You may remove any moldings, strips or existing flares from the vehicle for fitting and installation.

3. Clean Vehicle Body & Fender Flare



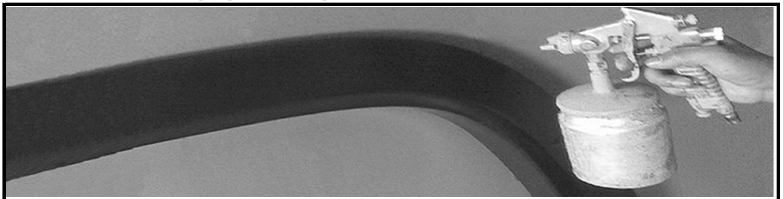
1. Wash and wipe dry the areas of contact on the vehicle body.
2. Clean the surface and inside edge of the fender flare where the rubber seal is to be attached.

5. Installation (Left Front Flare Shown)



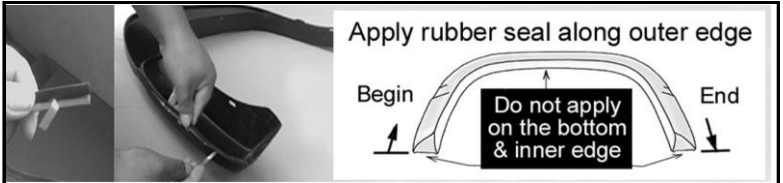
1. Remove 4 existing screws from the vehicle with 7 mm socket.
2. Place the flare on the vehicle in **best position**.
3. Re-Install the existing factory screws into the original location that were previously removed. Do not tighten the screws fully until the flare are aligned and extrusive against the body.

2. Paint Flare(Optional)



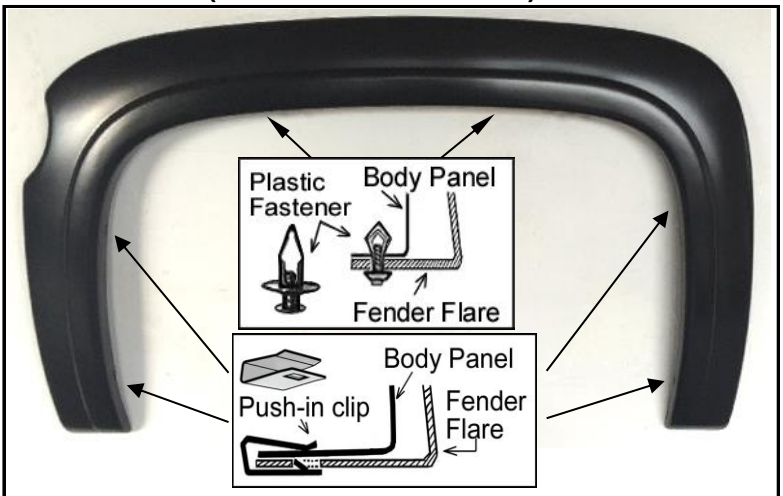
1. Hire a professional painter or body shop and follow the paint manufacturer specifications to paint the flares.
2. Clean all fender flare surface with clean water & a mild detergent before paint, don't use lacquer thinner or any solvent based product

4. Apply Rubber Seal



1. Remove 1 inch tape liner from rubber seal, apply it on the flare, start one end & along the edge that comes in contact with body panel. **Caution: 3M tape will stick on the inside of the flare.**
2. Make sure the rubber seal along the edge well, and rip the tape liner off gradually, apply pressure on the tape in the same time to ensure that it adheres well. Trim excess rubber seal and so on.

6. Installation (Left Rear Flare Shown)



1. Place the flare on the vehicle in **best position**.
2. Apply 2 Plastic Expanding Fastener into the mounting slot in flare and secure it to the vehicle as shown.
3. Apply 4 Push-In Clip into the mounting slot in flare and secure it to the vehicle as shown.

Optional : You can use the included self tapping screws to secure the flare if need be.

All rights reserved by Prime Selections, Inc. No part of this publication may be reproduced.

Prime Selections, Inc. · 5870 Ranchester Drive, Ste 650, Houston, TX 77036