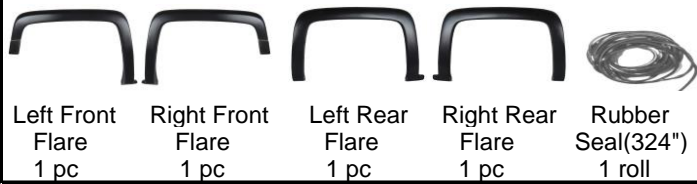


Make & Model

CHEVY SILVERADO 1500 14-up . 2500/3500 15-up
(FULL SIZE . 69.3" . 78.8" & 97.6" BED BED)

OEM Style

Parts A - Flares & Rubber Strip



Parts B - Parts for Installation



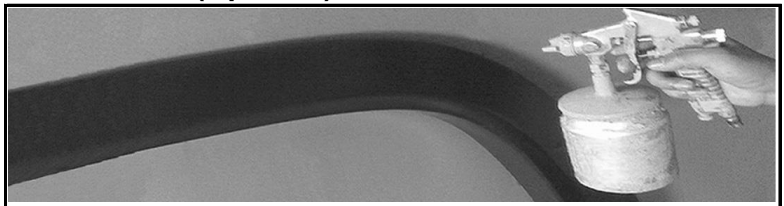
Caution: Always check the package & parts, ensure the fitment of flare and follow the instruction carefully. PSI will not be responsible for painting & orther cost incurred to incorrect fender flares, failure of installation, shipping damage and or any modified flares.

1. Pre-Installation



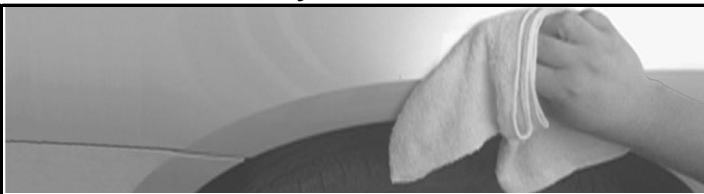
1. Prefit and ensure both left (driver) side & right (passenger) side fender flare to the vehicle before painting or installation.
2. You may remove any moldings, strips or existing flares from the vehicle for fitting and installation.

2. Paint Flare(Optional)



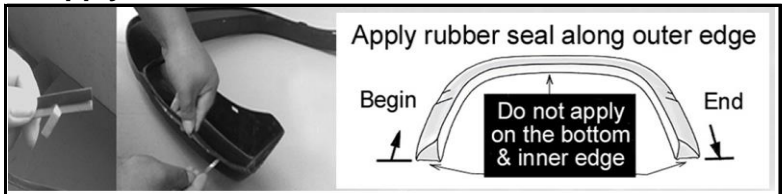
1. Hire a professional painter or body shop and follow the paint manufacturer specifications to paint the flares.
2. Clean all fender flare surface with clean water & a mild detergent before paint, don't use lacquer thinner or any solvent based product

3. Clean Vehicle Body & Fender Flare



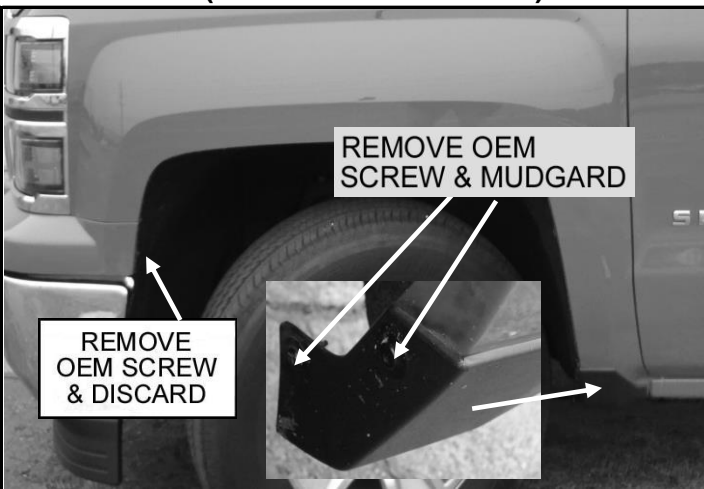
1. Wash and wipe dry the areas of contact on the vehicle body.
2. Clean the surface and inside edge of the fender flare where the rubber seal is to be attached.

4. Apply Rubber Seal



1. Remove 1 inch tape liner from rubber seal, apply it on the flare, start one end & along the edge that comes in contact with body panel. **Caution: 3M tape will stick on the inside of the flare.**
2. Make sure the rubber seal along the edge well, and rip the tape liner off gradually, apply pressure on the tape in the same time to ensure that it adheres well. Trim excess rubber seal and so on.

5. Installation (Left Front Flare Shown)



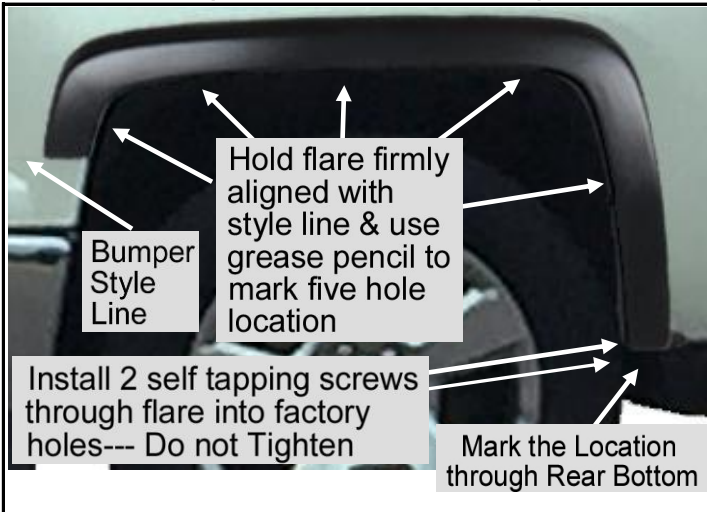
1. Make sure the front tire has been turned to outward for easy installation.
2. Remove 2 existing screws on mudguard with Torx Bit (T-15)
3. Remove the mudguard.
4. **For 1500 Models,** Remove factory screw at bottom front of wheel well (use a 7mm socket).

6. Installation (Left Front Flare Shown)



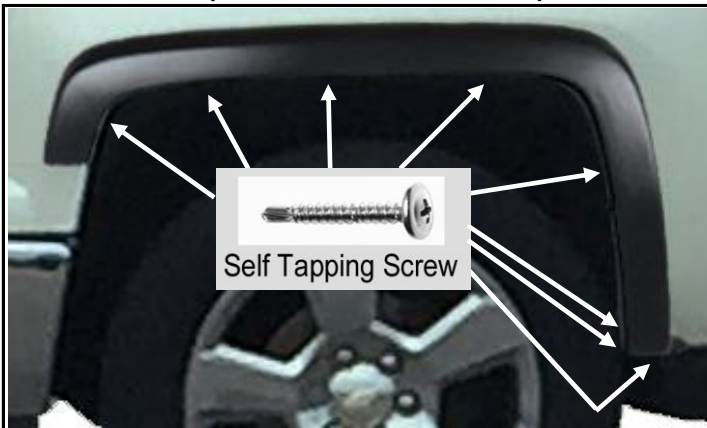
1. **For 1500 Models,** Connect the large front flare and shorter front piece from inside of the flare with two truss machine screw & nut.
DO NOT VERY TIGHTEN !!

7. Installation (Left Front Flare Shown)



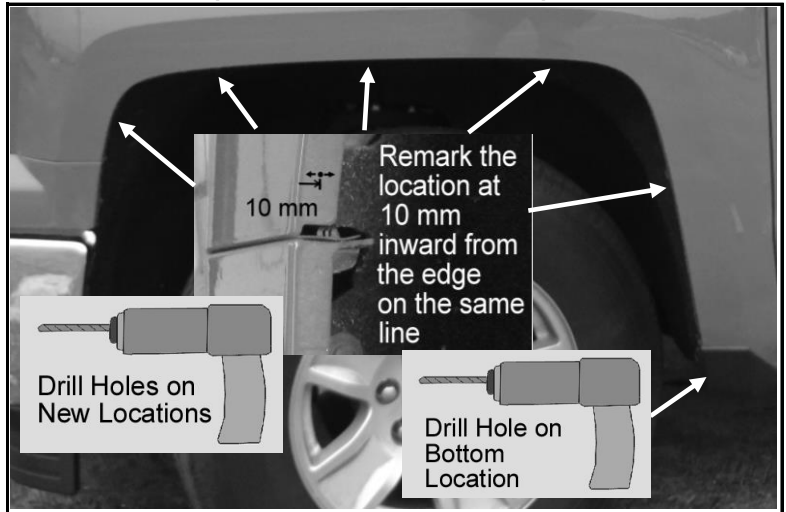
1. Place the flare in right position, install 2 self tapping screws through two bottom rear holes in flare into the factory holes. **(show on the bottom left) (Do not fully tighten screw)**
2. Hold the flare firmly, aligned it with the bumper style line. Use the grease pencil to mark 5 locations through the holes in the flare **(show on the top illustration)**, and one hole through rear bottom hole in flare. **(show on the bottom right illustration)**

9. Installation (Left Front Flare Shown)



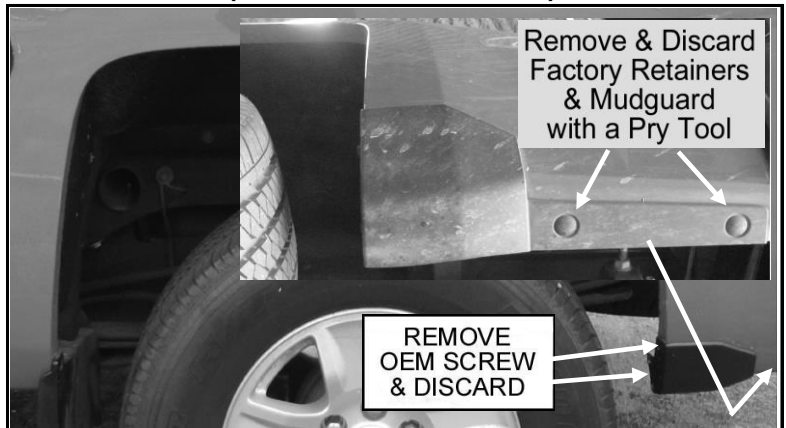
1. Ensure the flare is line up, apply 6 Self Tapping Screws over 6 new locations through the holes in flare.
2. Install 2 self tapping screws through two bottom rear holes in flare into the factory holes, then fully tighten all screws.

8. Installation (Left Front Flare Shown)



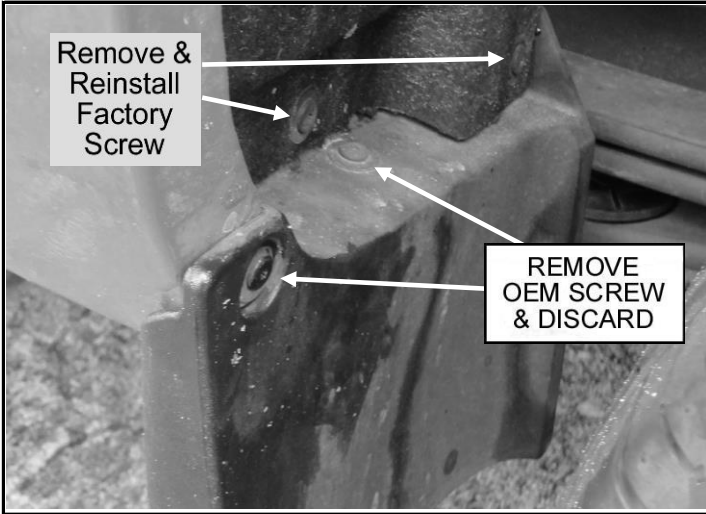
1. Remove the flare and 2 self tapping screws.
2. Remark the 5 locations (made in step 7) on same line, at 10 mm inward from the edge of the fender. **(see top)**
3. Use a drill bit (3/32") to drill 5 holes on the **new locations**.
4. Use a drill bit (3/32") to drill the hole on the rear bottom.

10. Installation (Left Rear Flare Shown)



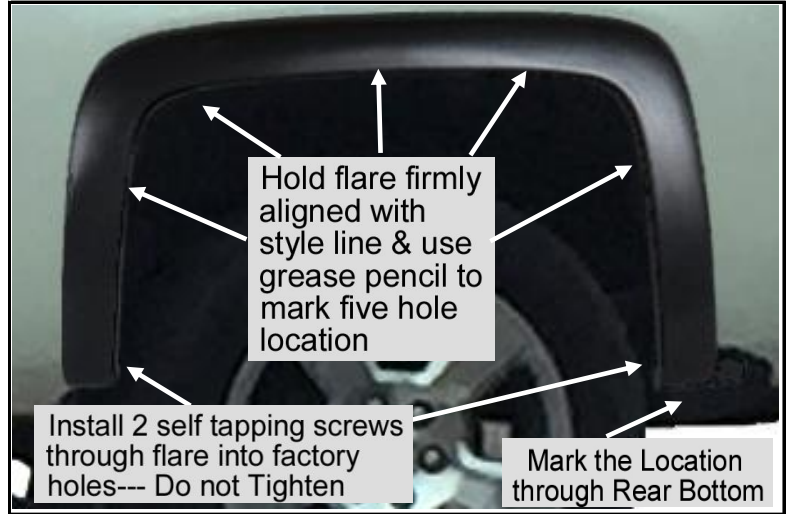
1. Remove and discard the existing screws on mudgard with Torx Bit (T-15).
2. Remove the factory retainers in bottom of the factory mudgard with a pry tool, discard the mudgard.

11. Installation (Left Rear Flare Shown)



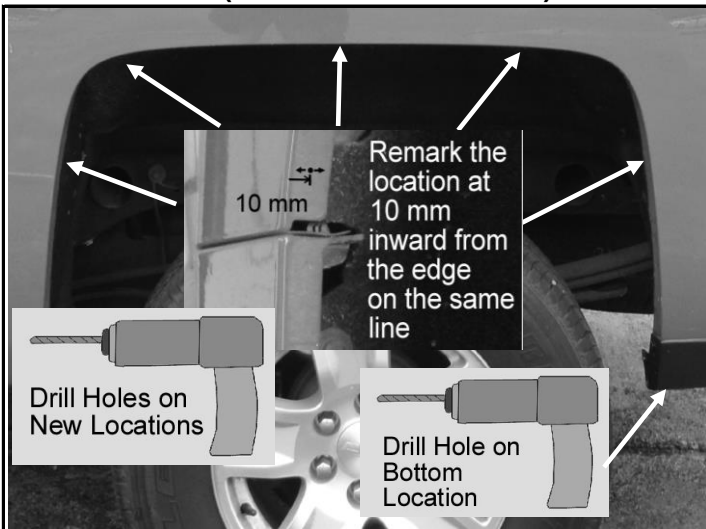
1. Remove 4 OEM screws from the plastic wheel well piece with a Torx Bit (T-15).
2. Reinstall 2 OEM screws into wheel well liner. **(see top illustration)**
3. Discard 2 OEM screws & remove the plastic wheel well piece **(see lower illustration)**

12. Installation (Left Rear Flare Shown)



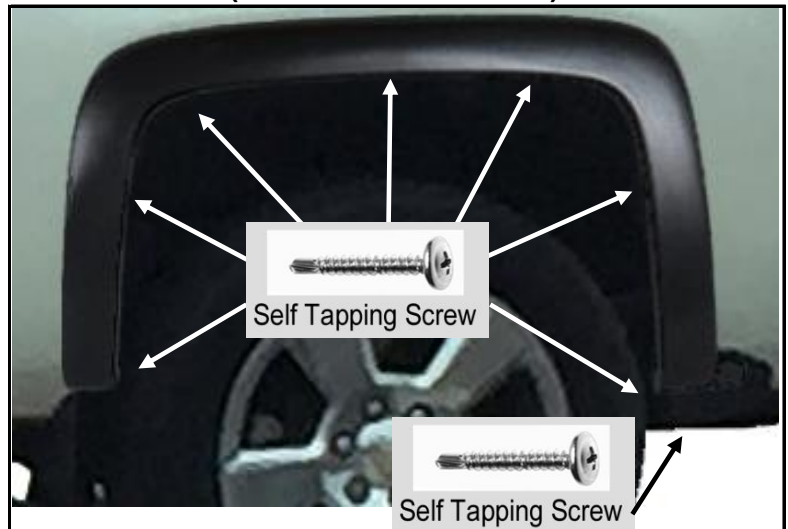
1. Place the flare in right position, install 2 self tapping screws through front & rear bottom hole in flare into the factory holes, **(show on the bottom left illustration) (Do not fully tighten screw)**
2. Hold the flare firmly, ensure the flare is line up. Use the grease pencil to mark 5 locations through the holes in the flare **(show on the top illustration)**, and one hole through rear bottom hole in flare. **(show on the bottom right illustration)**

13. Installation (Left Rear Flare Shown)



1. Remove the flare and 2 self tapping screws.
2. Remark the 5 locations (made in step 7) on same line, at 10 mm inward from the edge of the fender. **(see top)**
3. Use a drill bit (3/32") to drill 5 holes on the **new locations**.
4. Use a drill bit (3/32") to drill the hole on the rear bottom.

14. Installation (Left Rear Flare Shown)



1. Ensure the flare is line up, apply 5 Self Tapping Screws over 5 new locations through the holes in flare.
2. Install 2 self tapping screws through front & rear bottom holes in flare and into the factory holes, and one self tapping screw through the rear bottom hole, then fully tighten all screws.

Optional : You can use the included self tapping screws to secure the flare if need be.

All rights reserved by Prime Selections, Inc. No part of this publication may be reproduced.

Prime Selections, Inc. · 5870 Ranchester Drive, Ste 650, Houston, TX 77036

