

Make & Model

CHEVROLET TAHOE 07-14 4D (Excluding LTZ Model)

INSTALLATION INSTRUCTION

Item No. 800-0132

OEM Style

Parts A - Flares & Rubber Strip



Left Front Flare	Right Front Flare	Left Rear Flare	Right Rear Flare	Rubber Seal (338")
1 pc	1 pc	2 pcs	2 pcs	1 roll

Parts B - Parts for Installation



Plastic Fastener	Self Tapping Screw	Adhesion Primer
12 pcs	8 pcs	1 bottle

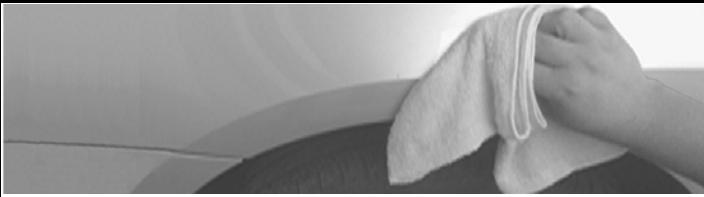
Caution: Always check the package & parts, ensure the fitment of flare and follow the instruction carefully. PSI will not be responsible for painting & other cost incurred to incorrect fender flares, failure of installation, shipping damage and or any modified flares.

1. Pre-Installation



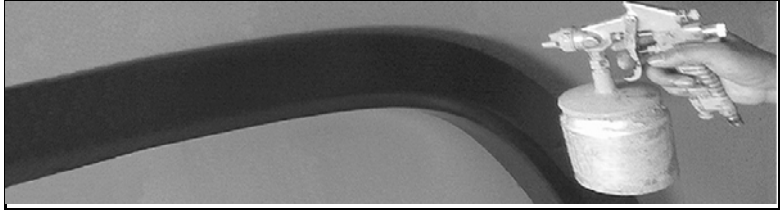
1. Prefit and ensure both left (driver) side & right (passenger) side fender flare to the vehicle before painting or installation.
2. You may remove any moldings, strips or existing flares from the vehicle for fitting and installation.

3. Clean Vehicle Body & Fender Flare



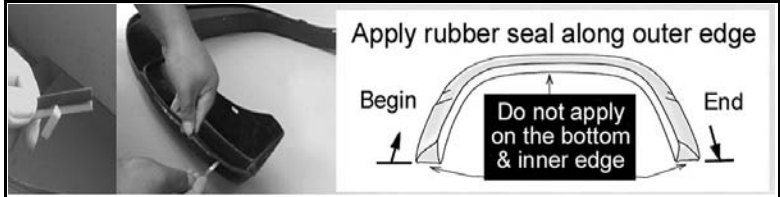
1. Wash and wipe dry the areas of contact on the vehicle body.
2. Clean the surface and inside edge of the fender flare where the rubber seal is to be attached.

2. Paint Flare(Optional)



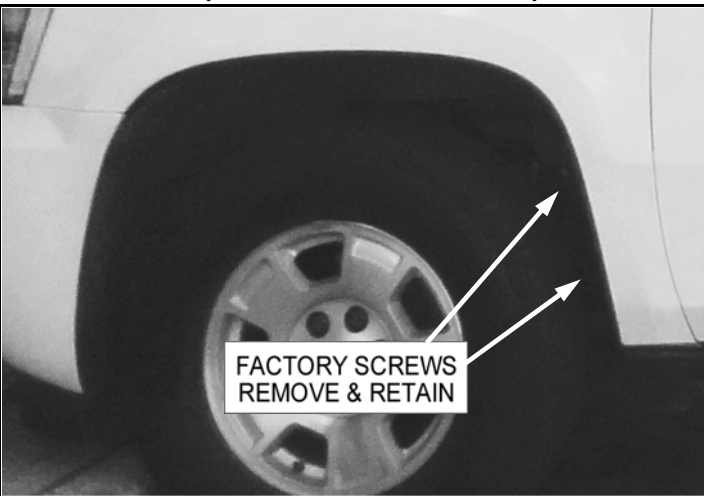
1. Hire a professional painter or body shop and follow the paint manufacturer specifications to paint the flares.
2. Clean all fender flare surface with clean water & a mild detergent before paint, don't use lacquer thinner or any solvent based product

4. Apply Rubber Seal



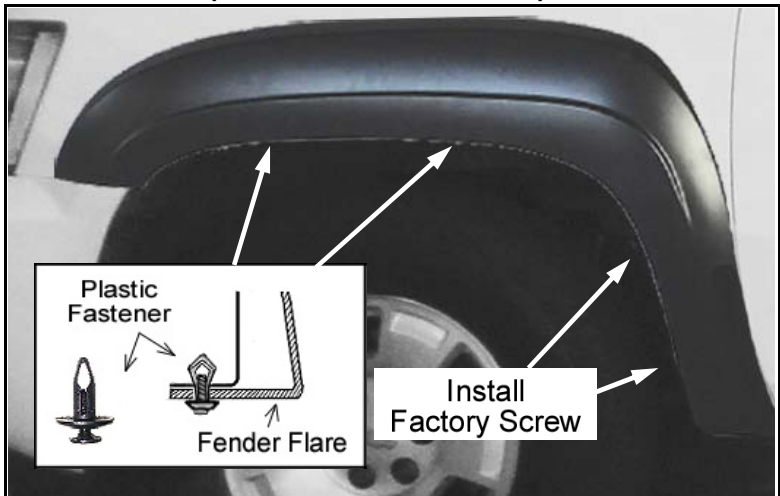
1. Remove 1 inch tape liner from rubber seal, apply it on the flare, start one end & along the edge that comes in contact with body panel. **Caution: 3M tape will stick on the inside of the flare.**
2. Make sure the rubber seal along the edge well, and rip the tape liner off gradually, apply pressure on the tape in the same time to ensure that it adheres well. Trim excess rubber seal & so on.

5. Installation (Left Front Flare Shown)



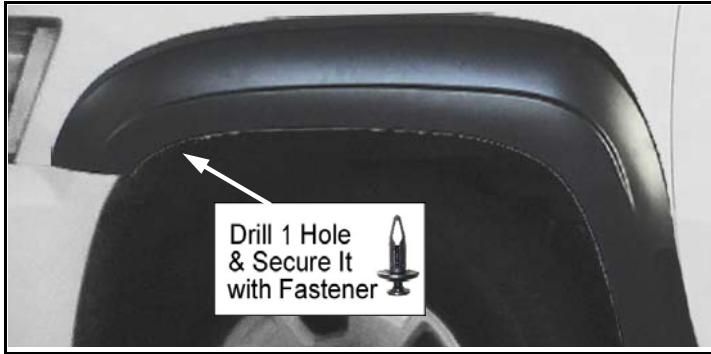
1. Remove and retain 2 existing factory screws on the vehicle . (use 9/32" socket)

6. Installation (Left Front Flare Shown)



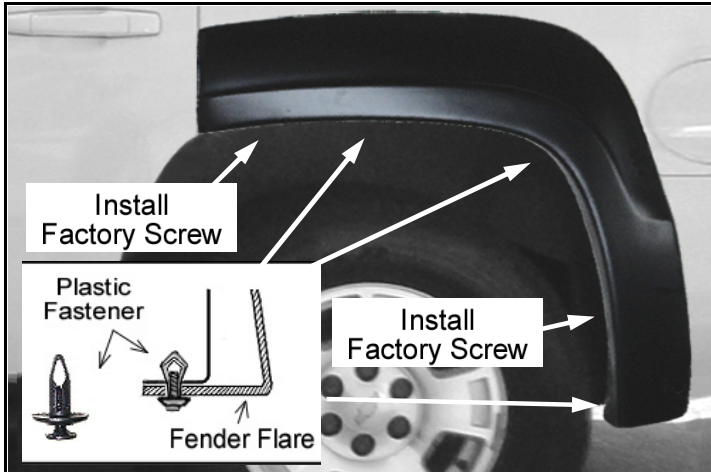
1. Apply 2 Plastic Fastener into the mounting slot on flare and secure it to the vehicle. **(see illustration)**
2. Reinstall 2 existing factory screws, removed in step 1.

7. Installation (Left Front Flare Shown)



1. Drill a hole (use 5/16" bit) through the forward hole on the flare into the splash shield.
2. Apply 1 Plastic Fastener into the hole on flare and secure it to the vehicle. (see illustration)

9. Installation (Left Rear Flare Shown)



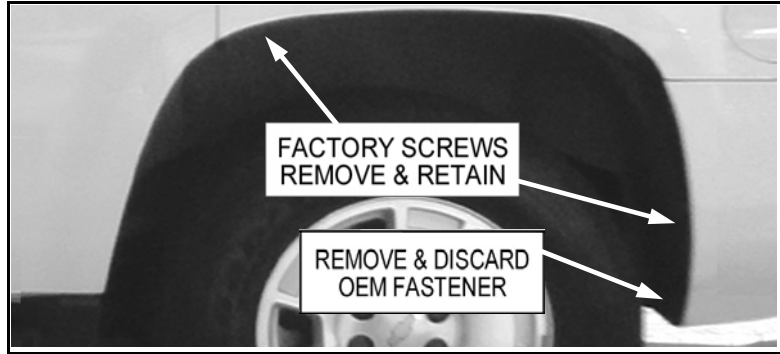
1. Reinstall 2 existing factory screws, removed in step 8.
2. Apply 3 Plastic Fastener into the mounting slot on flare and secure it to the vehicle. (see illustration)

11. Installation (Left Rear Flare Shown)



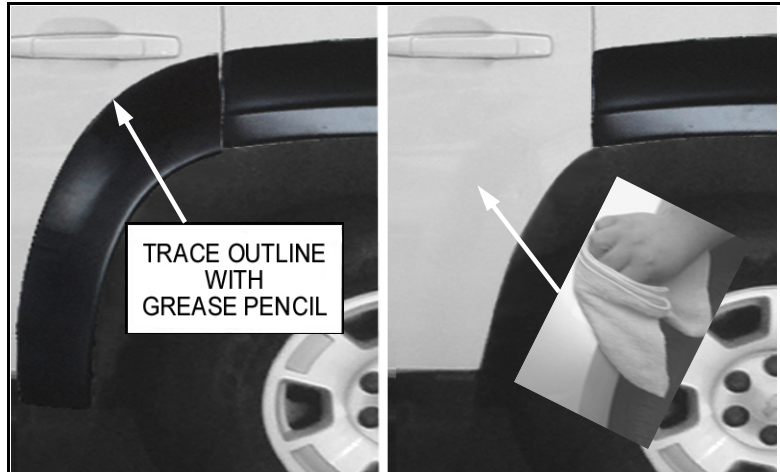
1. Use the supplied Adhesion Primer (bottle), to brush the area where the door piece will be attached with 3M tape. (Try to save the adhesion, do not use too much on one side)
2. Remove the tape liner long enough from 3M tape as shown.

8. Installation (Left Rear Flare Shown)



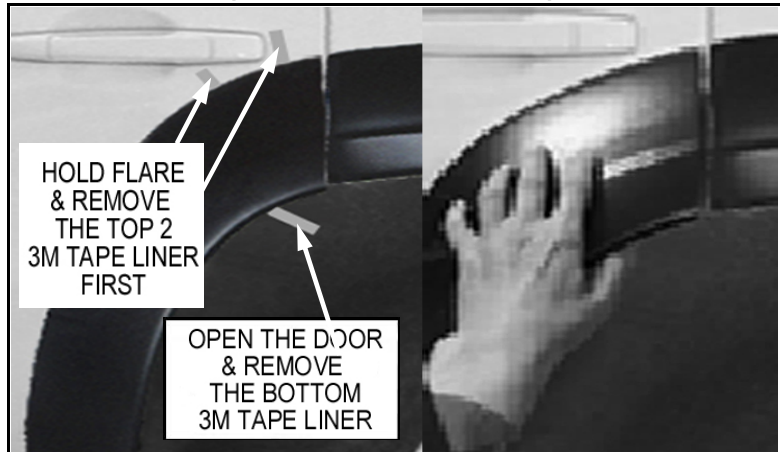
1. Remove and retain 2 existing factory screws on the vehicle. (use 9/32" socket)
2. Remove and discard 1 factory fastener.

10. Installation (Left Rear Flare Shown)



1. Place the door piece to the right position, trace the outline on the top with a grease pencil.
2. Clean surface with a wipe where the door piece will be attached.

12. Installation (Left Rear Flare Shown)



1. To prevent prematurely sticking, hold the door piece with an angle to apart the part (without liner) away from door.
2. Hold and adjust the door piece to the right position, make sure it is aligned and push it to stick on the door. (becarefull the gap)
3. After you confirm the placement, gently pull the 2 liner first, and then open the door, pull the third liner. (see illustration)
4. For proper bond, to apply firm pressure on the taped area, do not move the pieces after, it will be maximum adhesived after 24 hours.

optional : The included self tapping screw may be used for extra secure if needed.

All rights reserved by Prime Selections, Inc.. No part of this publication may be reproduced.

Prime Selections, Inc. · 5870 Ranchester Drive, Ste 650, Houston, TX 77036 · Tel: 713-2712300 · Fax: 713-2712306